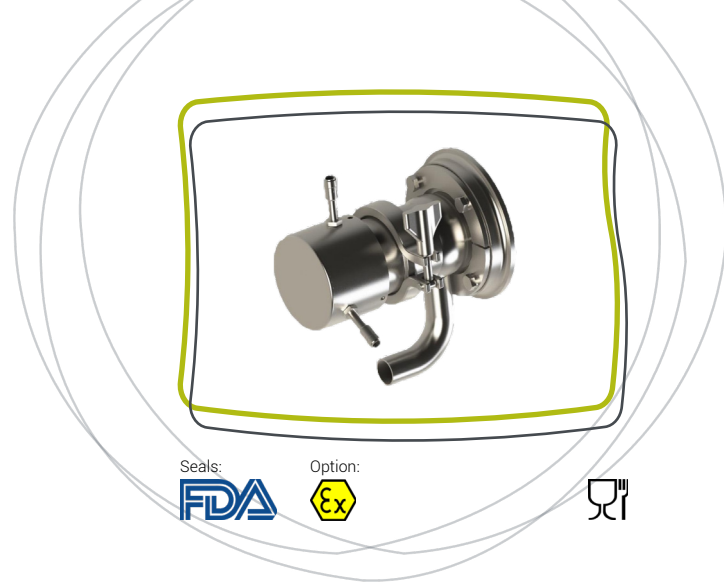


LRA[®]

Independent washing valve for agitated tank



Presentation

The LRA washing valve has been designed to provide enhanced cleaning of the tank during CIP cycles: it reaches the “blind spots” generated by components such as agitators and their shafts, anchors and scrapers.

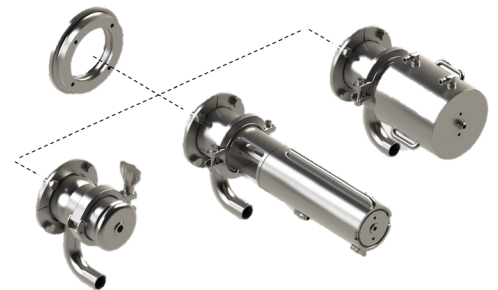
All LRA valves are strictly identical, therefore, they benefit from a series effect that offers excellent value for money.

Key features

- 🔑 Air-independent equipment: no control is required, the hydraulic pressure of the CIP triggers the opening of the LRA valve
- 🔑 Profitability: Reduced CIP cycle costs (compared to using a wash ball alone)
- 🔑 Productivity: Improved installation availability with reduced CIP times (compared with using a wash ball alone)
- 🔑 Environment: Water and washing product savings (compared to using a wash ball alone)
- 🔑 Autonomy: In the event of a power cut, an assistance spring keeps it closed
- 🔑 Modularity: Body interchangeability with LPA-A & LPAH valves

Applications

- For all types of products
- For enhanced sanitation of agitated process tanks



Technical features

Sizes: DN 25

Inlet fitting: Welding

Connection to the tank: Flush welding flange

Operating pressure in tank: From -1 to +6 bar (if double-acting actuator)

Sealing: Up to 4 bar in the tank in the absence of air in the cylinder

Operating temperature: From +1°C to +150°C

Washing flowrate: 2.7 m³/h at 1.2 bar

Start of opening CIP side: 0.6 bar

Start of opening inner side: 4 bar

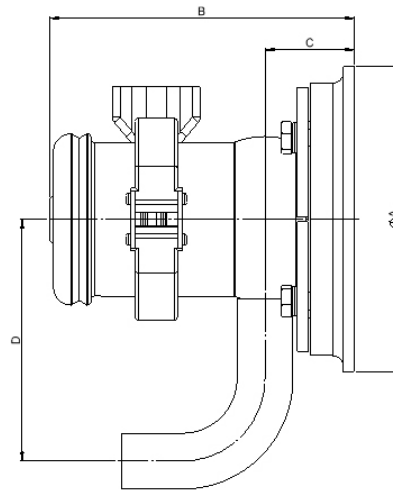
Materials

- Parts in contact with the product: Stainless steel 1.4404 (316L)
- Other metallic parts: Stainless steel 1.4307 (304L)
- Cylinder body: Ground cylinder tube Stainless steel 1.4307 (304L)
- Seals in contact with the product: EPDM (Ethylene Propylene Diene Monomer)

Dimensions in mm

Standard version

Sizes	DN 25
ØA	139
B	139
C	41
D	110



Options

- Other inlet connection: clamp
- Sealing: FKM (Fluorocarbon rubber, eq. Viton®) and Silicone (VMQ)
- Position sensor
- Specific surface finish

Warranty

12 months as from the date of dispatch (except for special conditions).

Conformity

- Elastomer seals compliant with FDA CFR 21.177.2600 and Regulation (EC) 1935/2004